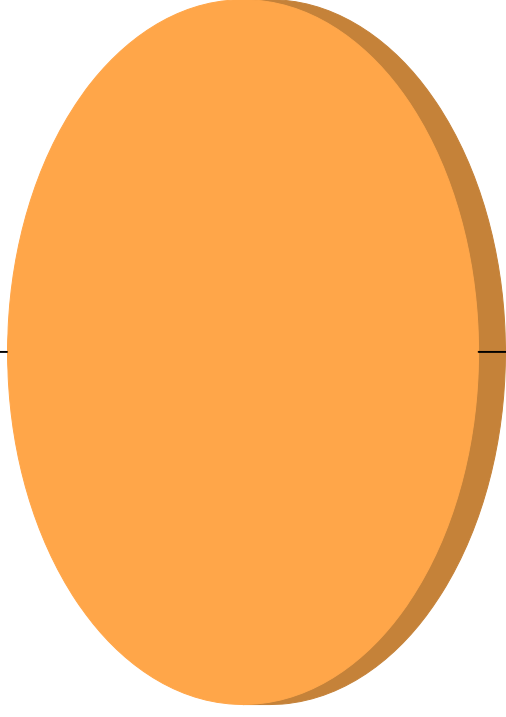


General Fund

### Ending Fund Balance Components

	Dollars per ADA	Total Amount
Beginning Fund Balance	\$4,786.44	\$909,424
+ Total Resources	\$10,067.22	\$1,912,772
- Total Uses	\$9,933.19	\$1,887,305
Ending Fund Balance	\$4,920.48	\$934,891
Fund Balance Difference	\$134.04	\$25,467

Nonspendable Assets  
0.08%



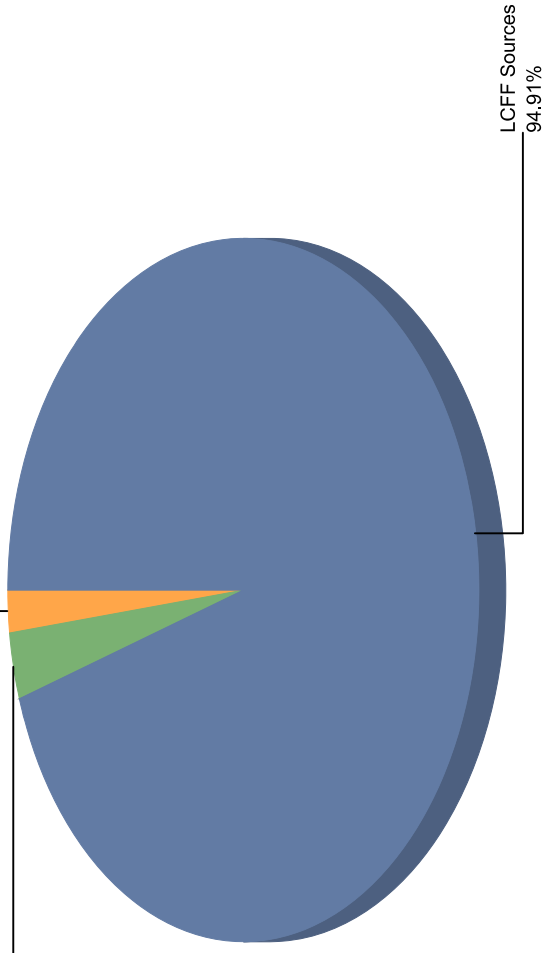
Ending Fund Balance Components	Amount
Nonspendable Assets	500
Restricted	0
Stabilization Arrangements	0
Other Committed	650,000
Other Assignments	0
Reserve for Economic Uncertainties	0
Other Assigned	0
	Other Committed 99.92%

General Fund

**Total Revenue Summary**  
(as % of Total Revenue)

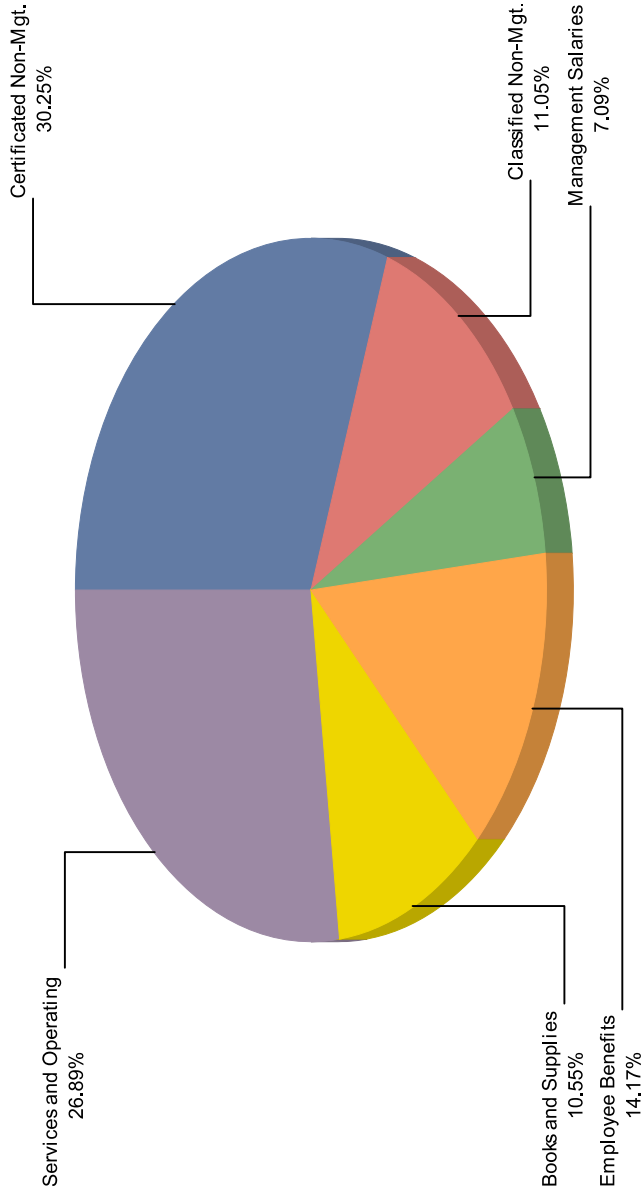
Revenue by Object:	Dollars per ADA	Total Amount
LCFF Sources	10,037.13	1,907,055
Federal Revenue	0.00	0
Other State Revenue	328.64	62,442
Other Local Revenue	209.12	39,733
<b>Total Revenue</b>	<b>\$10,574.89</b>	<b>\$2,009,229</b>
<b>Transfer In &amp; Others</b>	<b>\$507.67-</b>	<b>\$96,457-</b>
<b>Total Resources</b>	<b>\$10,067.22</b>	<b>\$1,912,772</b>

Local Revenue 1.98%  
State Revenue 3.11%



## Total Expenditure Summary (as % of Total Expenditure)

Expenditure by Object:	Dollars per ADA	Total Amount
Cert. Non-Mgt. Salaries	3,005.00	570,951
Class. Non-Mgt. Salaries	1,097.50	208,525
Management Salaries	704.24	133,806
Employee Benefits	1,407.30	267,386
Books and Supplies	1,047.89	199,098
Services and Operating	2,671.26	507,539
Capital Outlay	0.00	0
Other Outgo	0.00	0
<b>Total Expenditure</b>	<b>\$9,933.19</b>	<b>\$1,887,305</b>
<b>Transfer out and Other:</b>	<b>\$0.00</b>	<b>\$0</b>
<b>Total Uses</b>	<b>\$9,933.19</b>	<b>\$1,887,305</b>

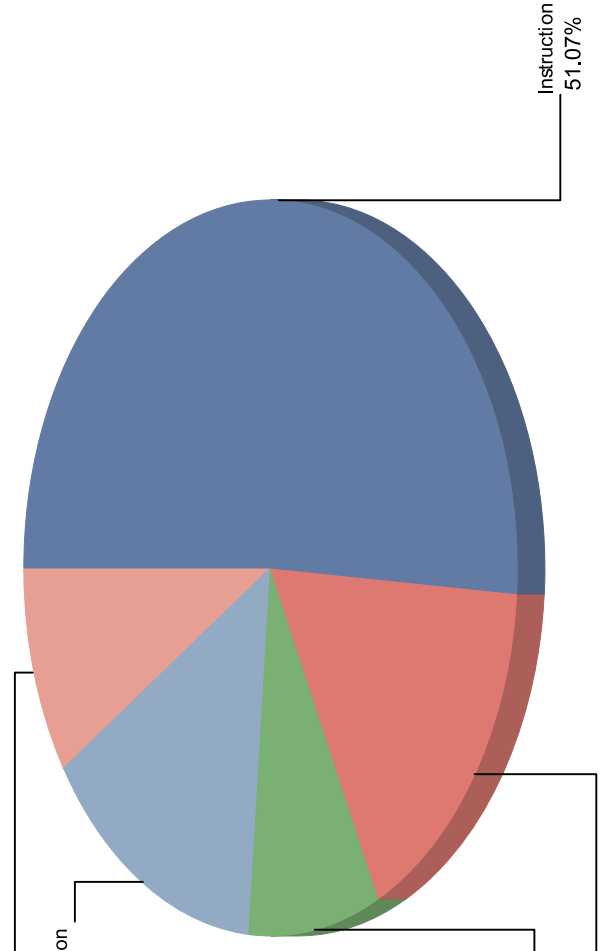


General Fund

## Total Expenditure by Function Summary

(as % of Total Expenditure)

Expenditure by Function:	Dollars per ADA	Total Amount
Instruction	5,072.53	963,780
Instruction Related Services	1,669.37	317,181
Pupil Services	857.53	162,931
Ancillary Services	0.00	0
Community Services	0.00	0
Enterprise	0.00	0
General Administration*	1,426.63	271,059
Plant Services	907.13	172,354
Other Outgo	0.00	0
<b>Total</b>	<b>\$9,933.19</b>	<b>\$1,887,305</b>



**\* General Administration Expenditure Breakdown:**

Board and Supt. Administration	530.49	100,792
Other General Administration	787.38	149,603
Centralized Data Processing	108.76	20,664